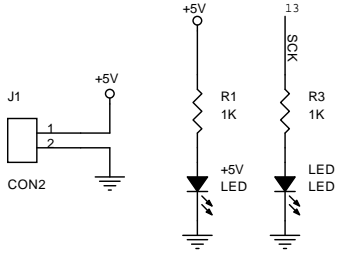


*c2 아두이노로 사용시 조립하지 마세요!



U1 ATMEGA1280/2560	Pin	Function	Pin	Function	
30	RESET	RESET	71	PA7	
33	XTAL2	XTAL2	72	PA6	
34	XTAL1	XTAL1	73	PA5	
98	AREF	AREF	74	PA4	
100	AVCC	AVCC	75	PA3	
99	AGND	AGND	76	PA2	
10	VCC	VCC	77	PA1	
31	VCC	VCC	78	PA0	
61	VCC	VCC	26	PB7	
80	VCC	VCC	25	PB6	
11	VCC	VCC	24	PB5	
32	GND	GND	23	PB4	
62	GND	GND	22	PB3	
81	GND	GND	21	PB2	
42	PL7	PL7	20	PB1	
43	PL6	PL6	19	PB0	
44	PL5(OC5C)	PL5(OC5C)	60	PC7	
45	PL4(OC5B)	PL4(OC5B)	59	PC6	
46	PL3(OC5A)	PL3(OC5A)	58	PC5	
47	PL2(T5)	PL2(T5)	57	PC4	
48	PL1(ICP5)	PL1(ICP5)	56	PC3	
49	PL0(ICP4)	PL0(ICP4)	55	PC2	
A15	PK7(ADC15/PCINT23)	PK7(ADC15/PCINT23)	54	PC1	
A14	PK6(ADC14/PCINT22)	PK6(ADC14/PCINT22)	53	PC0	
A13	PK5(ADC13/PCINT21)	PK5(ADC13/PCINT21)	50	PD7	
A12	PK4(ADC12/PCINT20)	PK4(ADC12/PCINT20)	49	PD6	
A11	PK3(ADC11/PCINT19)	PK3(ADC11/PCINT19)	48	PD5	
A10	PK2(ADC10/PCINT18)	PK2(ADC10/PCINT18)	47	PD4	
A9	PK1(ADC9/PCINT17)	PK1(ADC9/PCINT17)	46	PD3	
A8	PK0(ADC8/PCINT16)	PK0(ADC8/PCINT16)	45	PD2	
79	PJ7	PJ7	44	PD1	
69	PJ6(PCINT15)	PJ6(PCINT15)	43	PD0	
68	PJ5(PCINT14)	PJ5(PCINT14)	9	PE7	
67	PJ4(PCINT13)	PJ4(PCINT13)	8	PE6	
66	PJ3(PCINT12)	PJ3(PCINT12)	7	PE5	
65	PJ2(XCK3/PCINT11)	PJ2(XCK3/PCINT11)	6	PE4	
64	PJ1(TXD3/PCINT10)	PJ1(TXD3/PCINT10)	5	PE3	
15	PJ0(RXD3/PCINT9)	PJ0(RXD3/PCINT9)	4	PE2	
27	PH7(T4)	PH7(T4)	3	PE1	
8	PH6(OC2B)	PH6(OC2B)	2	PE0	
17	PH5(OC4C)	PH5(OC4C)	90	PF7	
7	PH4(OC4B)	PH4(OC4B)	91	PF6	
6	PH3(OC4A)	PH3(OC4A)	92	PF5	
14	PH2(XCK2)	PH2(XCK2)	93	PF4	
16	PH1(TXD2)	PH1(TXD2)	94	PF3	
17	PH0(RXD2)	PH0(RXD2)	95	PF2	
			96	PF1	
			97	PF0	
				98	PG5
				99	PG4
				100	PG3
					ALE
					RD
					WR
					PG0

